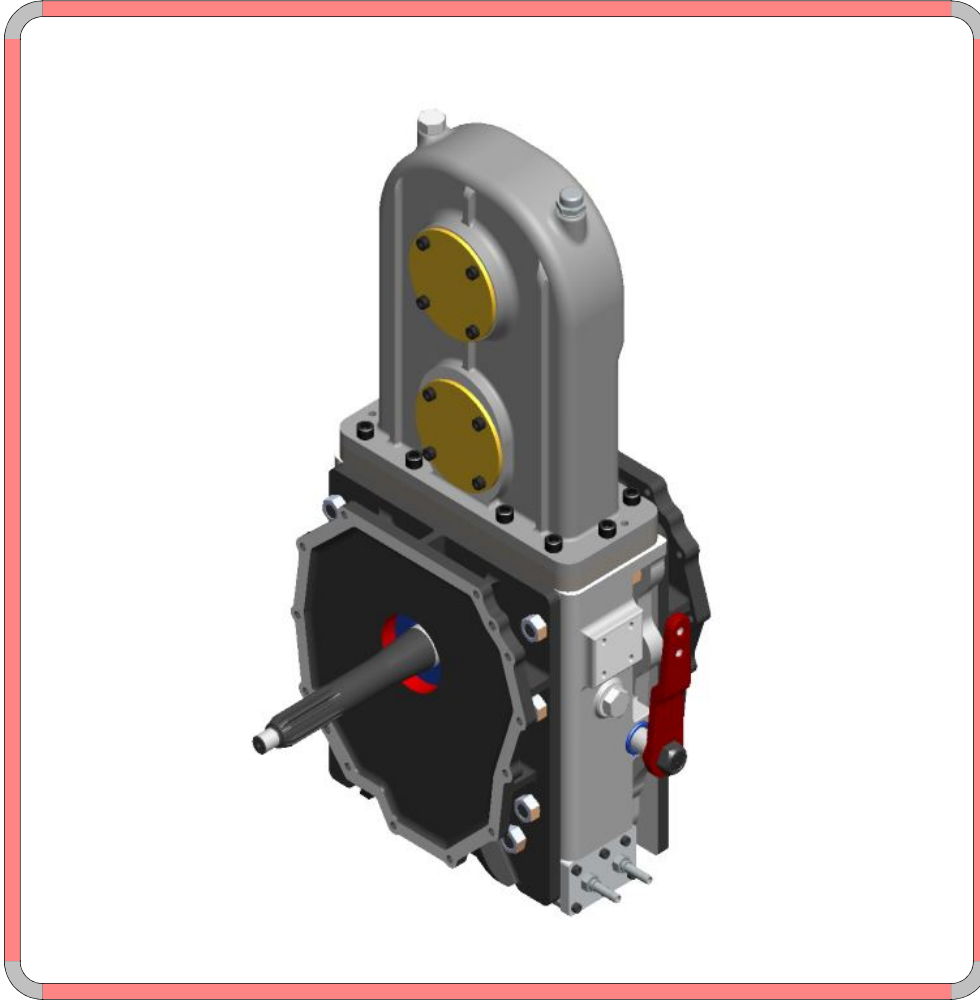


**Gearbox Type : M035S5**

General Information



- Gearbox Type : MITSUBISHI MO35S5
- Equipment can work when vehicle on drive mode
- PTO output is on differential side
- Product has Cooling System with water
- Control type : Mechanic or Pneumatic
- Product mount between engine flywheel and transmission
- The equipment cannot be switched on while the vehicle is moving!
- Application Area;  
Fire Fighting Vehicles  
Road Maintenance Vehicles  
For water tankers and other on-vehicle equipment



**Gearbox Type : M035S5**
**Technical Details**

Technical Values			
	Maximum Values	Internal Ratio	Max. RPM
① & ②	4650 Nm	1/1	-
③	130 kW	1/1.5 1/2.2	3000 rpm

Weight	136 kg
Body Material	ÜST GÖVDE:AL ALT GÖVDE : GH190
Oil Type & Amount	80W-90 - 6,5 lt

